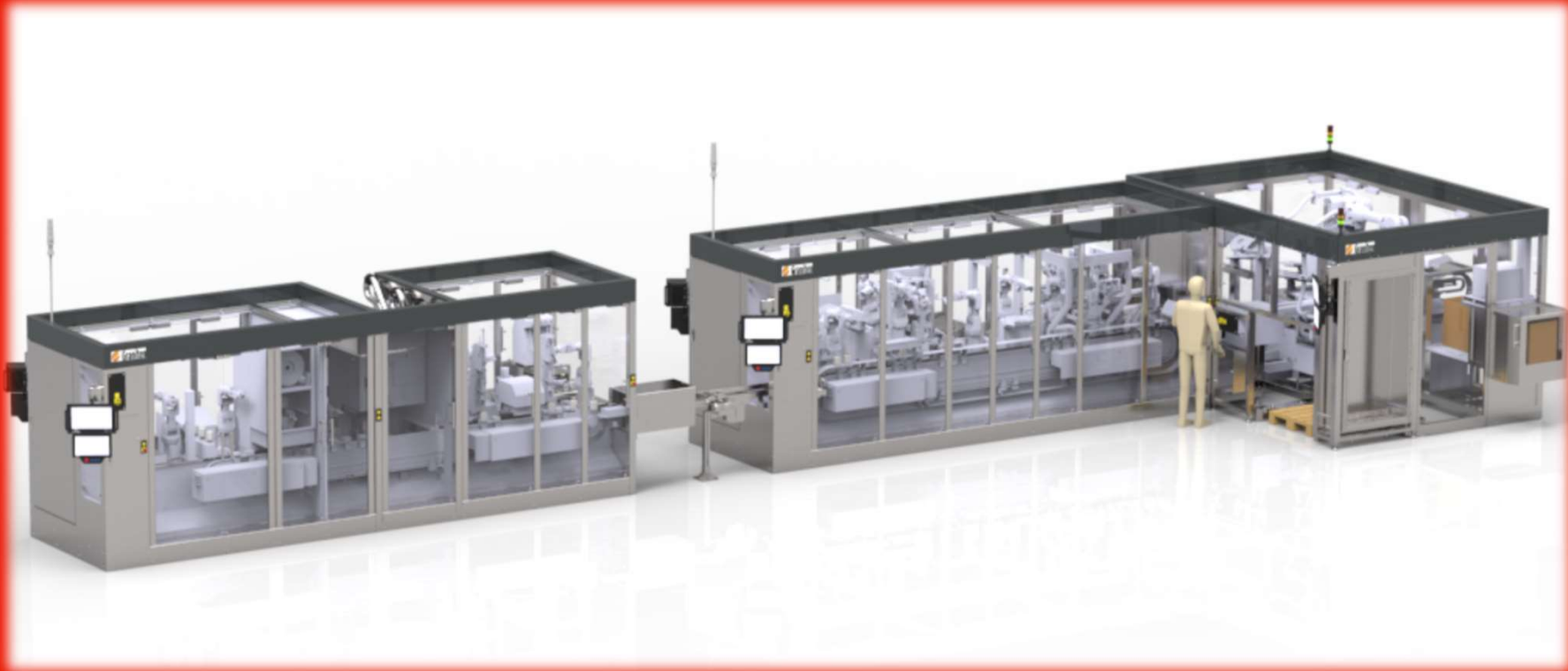


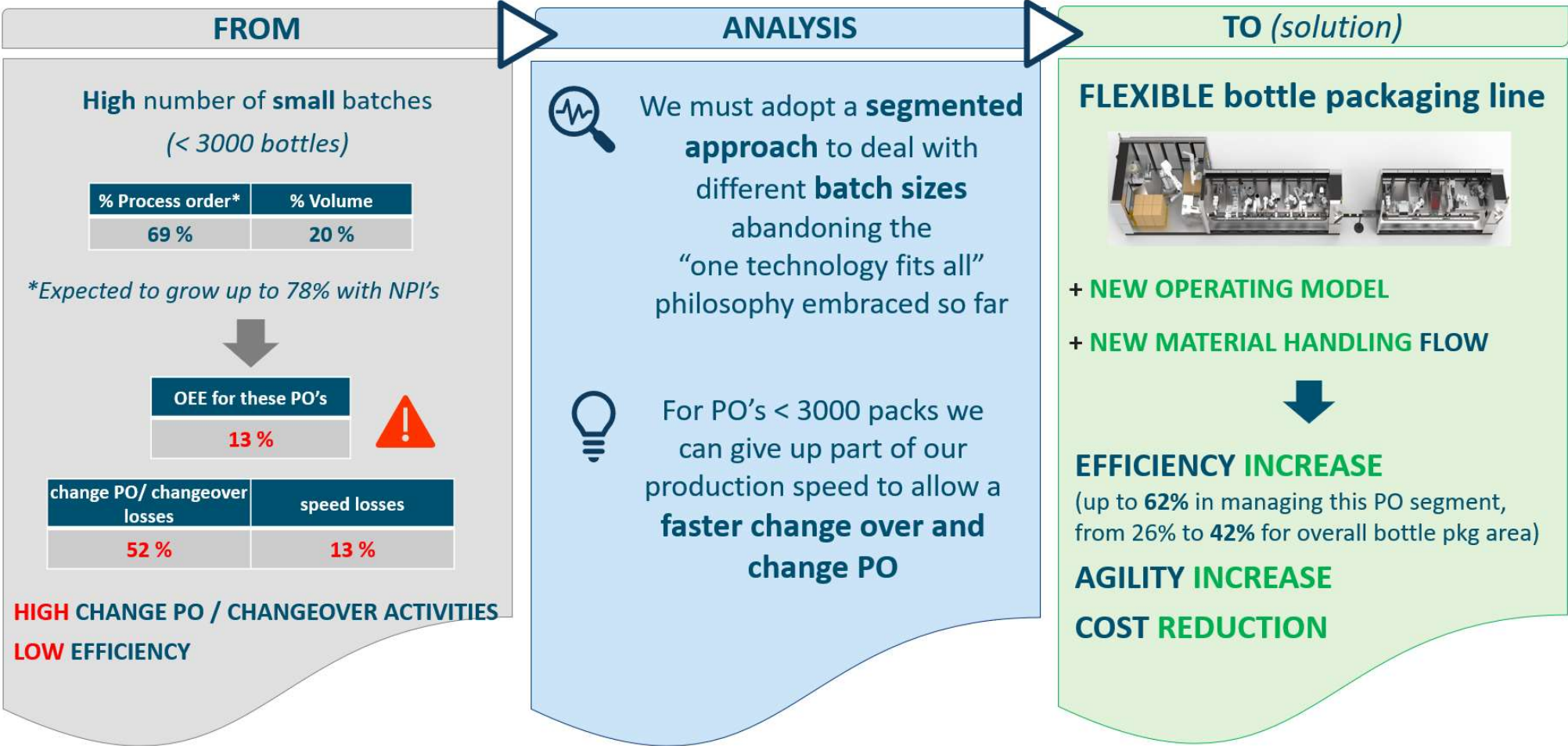
Flexible packaging line

Alessandro Zanotti – Manufacturing & Packaging Engineering Manager

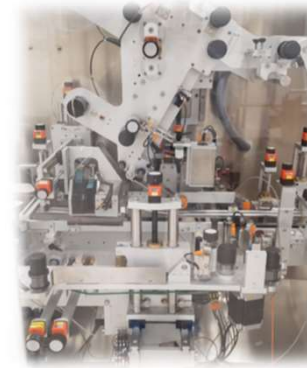


Johnson & Johnson
Innovative Medicine

Flex packaging line + new operational model

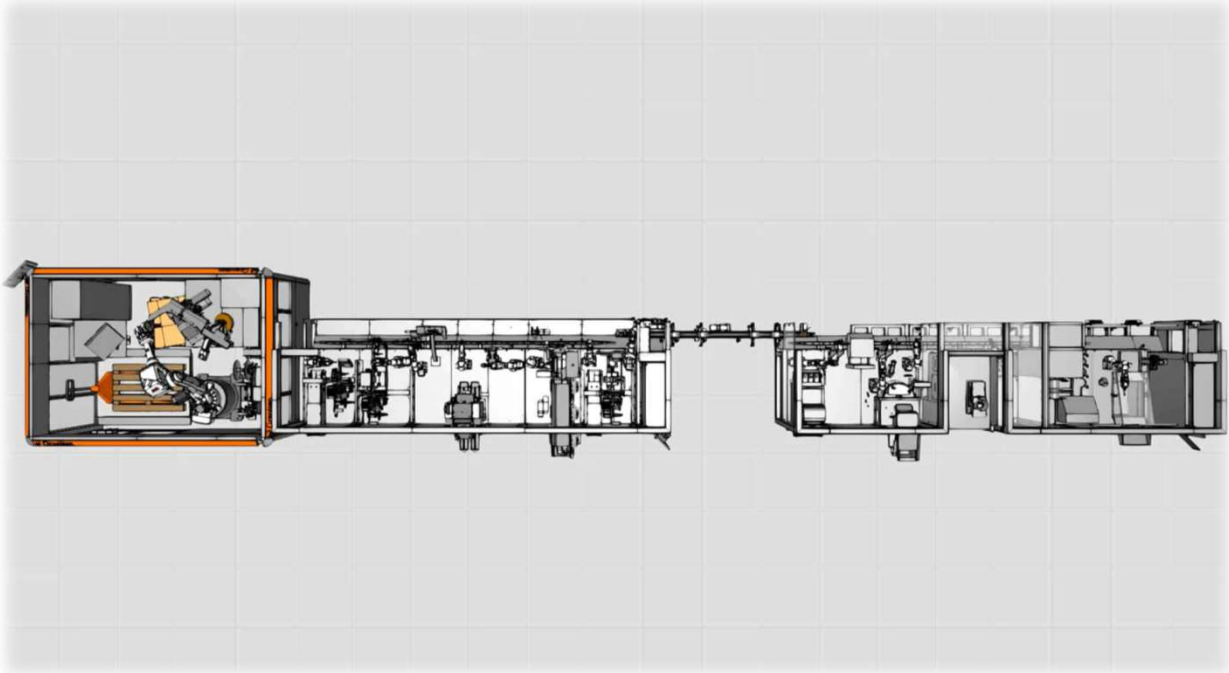
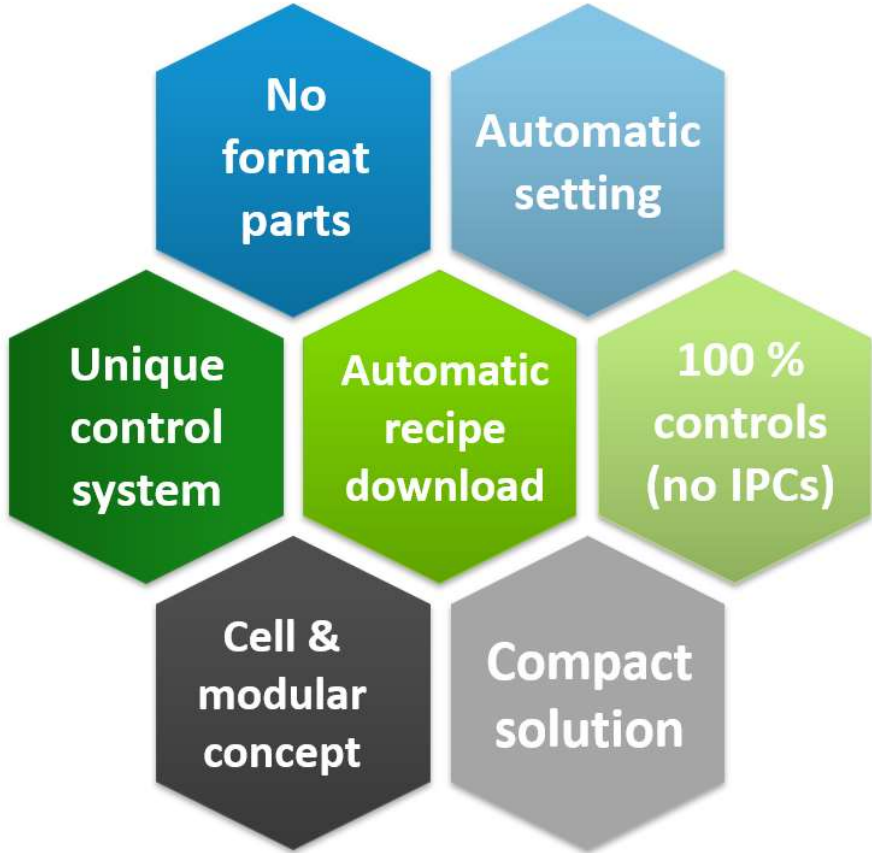


Current technology



- Up to 15 **different equipment** in a line
- Up to 15 **different control panels, passwords, recipes of parameters...**
- Large amount of **format parts**
- Many **fine-tuning adjustments** required to operator

Flex line: technical drivers



Flexible concept

Carton folding



Capping + transportation system



Primary cell



Secondary/Tertiary cells: videos

Secondary cell

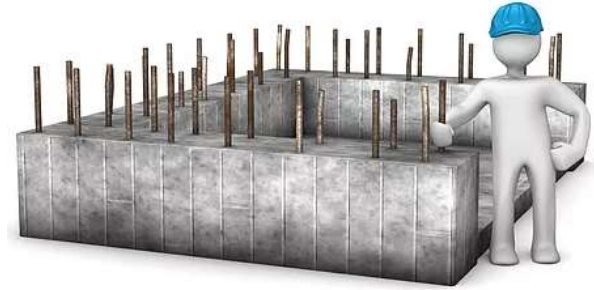


Tertiary cell



Primary cell

Build the line with **strong**
foundation...



...and install it in
the **right**
environment!



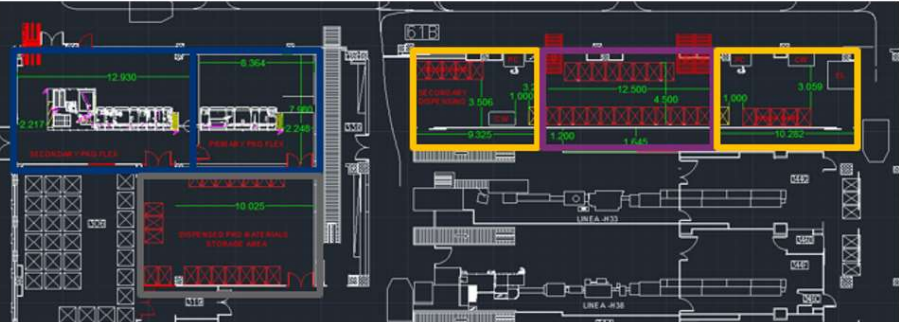
360° design – process impact

Agility in managing small batches is not limited to flexible equipment but it is possible only with an holistic approach



Material Handling

➤ Material handling system + new operating model



Business impacts & benefits



Economical management of **MOQ=1**



Agility and **rapid** reaction in responding **customer demand**



OEE increase on all bottle lines



Optimized capacity utilization

(2 lines will be switched off with current volumes)



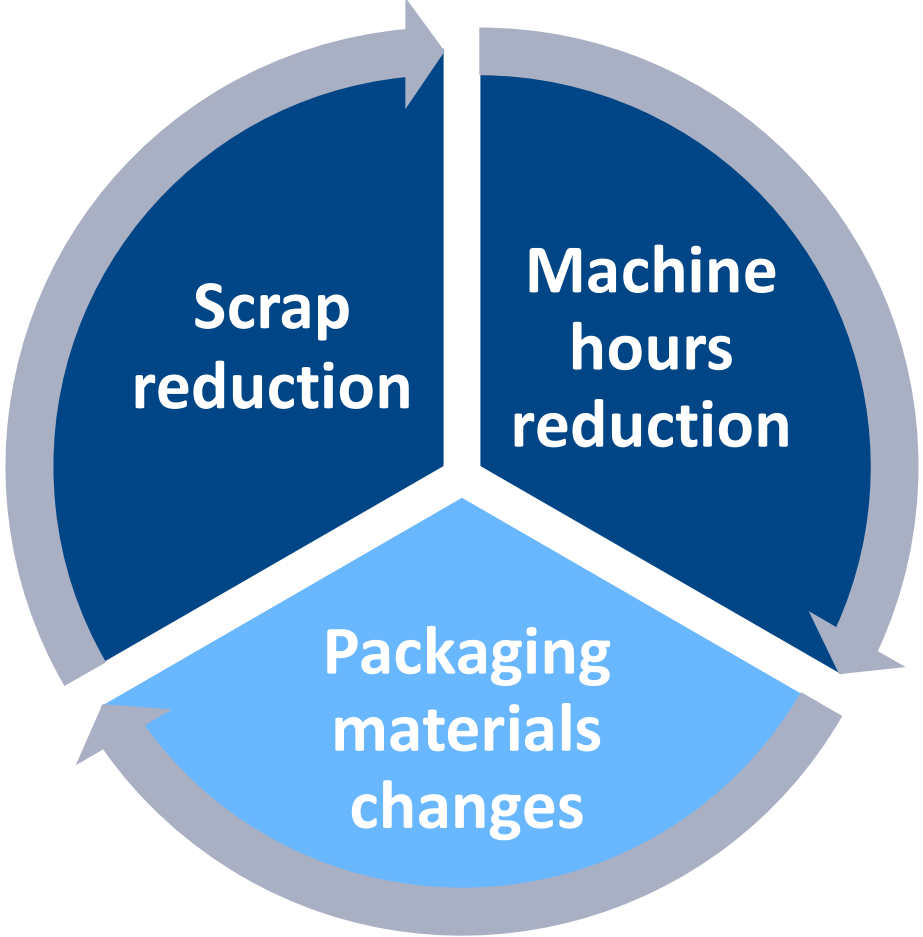
Fast new product introduction (no format parts)



Compliance and **quality** increase

Sustainability effects

- No set up
- MOQ reduction
- No destructive IPC



- Energy efficiency
- Utilities use reduction

Thank you

Johnson&Johnson

If you have more questions, please contact:
Latina Cultural Champions